



EXOPAN STEEL NON-STICK FLARED BREAD MOLD

Edge rolled around a copper wire for ultimate heat distribution.

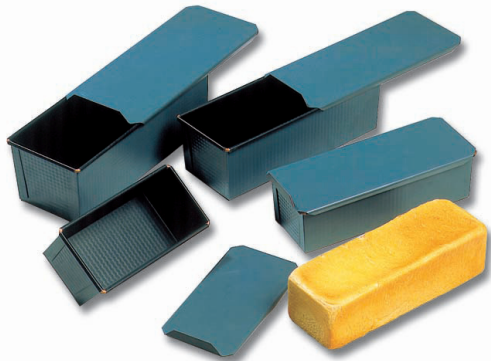
Item #	L"	W"	H"	Capacity
331094	6 1/3	2 1/2	2 1/3	17 oz.
331095	7 1/16	2 3/4	2 1/2	22 oz.
331096	7 7/8	3 1/6	2 3/4	30 oz.
331097	8 2/3	3 1/3	3	1 1/4 qt.
331098	9 1/2	3 1/2	3 1/6	1 5/8 qt.
331099	10 1/4	3 3/4	3 1/3	1 7/8 qt.
331101	11 7/8	4 1/6	3 3/4	2 5/8 qts.



EXOPAN STEEL NON-STICK BREAD MOLD

Edge rolled around a copper wire for ultimate heat distribution.

Item #	L"	W"	H"	Capacity oz.
331071	5 1/2	2 7/8	2 3/4	23 1/3
331072	6 1/3	3	3	30 1/2
331073	7 1/8	3 1/6	3 1/6	33 7/8
331074	8	3 1/6	3 1/6	38 7/8
331075	10	3 1/6	3 1/6	49
331076	12	3 1/6	3 1/6	59 1/6
331077	15 3/4	3 1/6	3 1/6	84 1/2
331078	19 2/3	3 1/6	3 1/6	108 1/6



EXOPAN STEEL NON-STICK BREAD MOLD WITH LID

Edge rolled around a copper wire for ultimate heat distribution.

Item #	L"	W"	H"	Bottom W"	Capacity
340853	7 1/4	3 1/3	3	3	300 g - 3/4 lb.
340854	9 3/4	3 1/2	3 1/4	3	500 g - 1 lb.
340855	10 1/2	4	3 1/2	3 1/2	800 g 1 2/3 lb.
340856	11 1/3	4 1/3	4	4	1 Kg - 2 lbs.



EXOPAN STEEL NON-STICK MINI LOAF MOLD

A straight shape for baking sweet or savory mini loaves to take away or serve on a buffet. Baking mini loaves that are easy to handle and easy to eat becomes a real pleasure.

Item #	L"	W"	H"	Capacity oz.
331082	7 1/8	1 3/4	1 3/4	12 1/3



EXOPAN STEEL NON-STICK BREAD MOLD

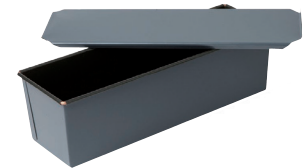
Edge rolled around a copper wire for ultimate heat distribution.

Item #	L"	W"	H"	Item #	L"	W"	H"
341601	5 1/2	3	3	341604	8	3	3
341602	6	3	3	341606	7	3 1/3	3
341603	7	3	3	341607	10	3 1/2	3

EXOPAN STEEL NON-STICK LONG BREAD MOLD WITH LID

Edge rolled around a copper wire for ultimate heat distribution.

Item #	L"	W"	H"
341641	15 3/4	4	4
341642	15 3/4	4 3/4	4 3/4
341643	15 3/4	5 1/2	5 1/2



EXOPAN STEEL NON-STICK LARGE BREAD MOLD

Wide toast pan with edge rolled around a copper wire for ultimate heat distribution.

Item #	L"	W"	H"	Base"
340961	15 3/4	4	3 1/8	3 1/2